



Crop Market Fact\$

November 4, 2014

John Bancroft
Market Strategies Program Lead

john.bancroft@ontario.ca

519-271-6974

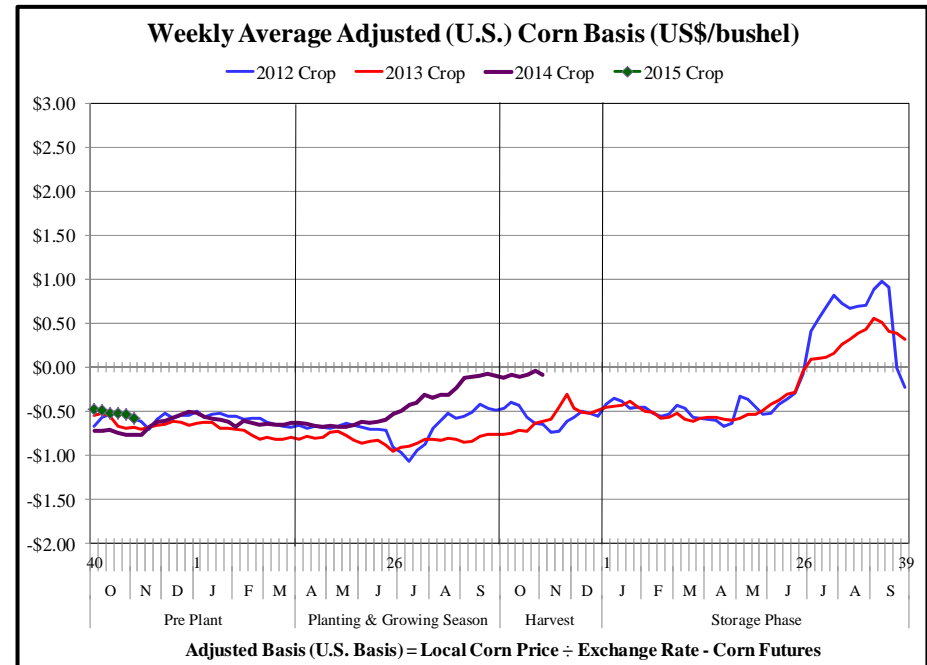
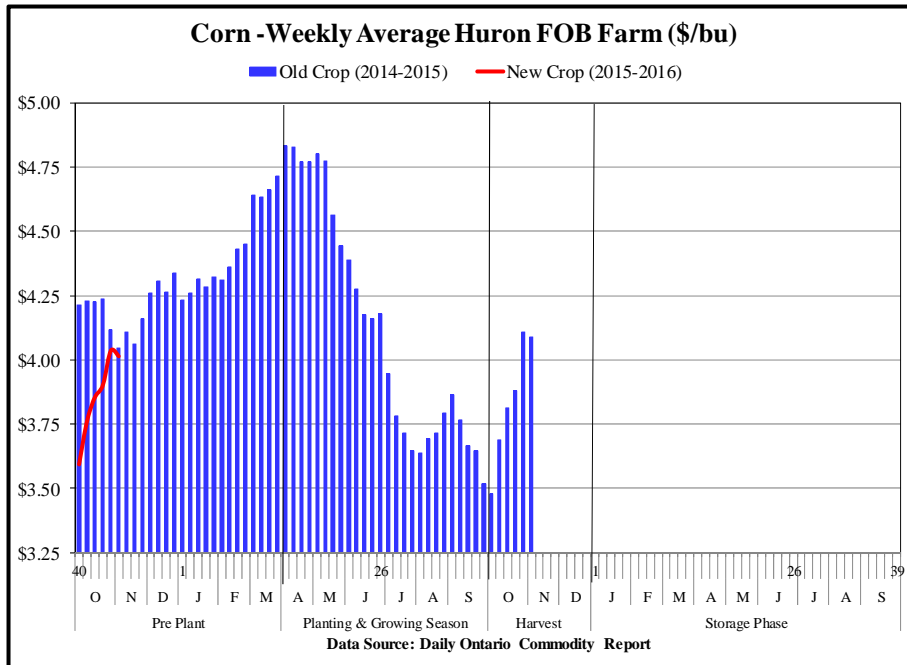
Tuesday Closing Market Prices

	07-Oct-14	14-Oct-14	21-Oct-14	28-Oct-14	04-Nov-14
Old Crop Corn Futures (US\$/bu) - Dec '14	\$3.41	\$3.57	\$3.56	\$3.65	\$3.65
Huron FOB Farm Old Crop Corn Basis (C\$/bu)	\$0.30	\$0.30	\$0.30	\$0.40	\$0.40
New Crop Corn Futures (US\$/bu) - Dec'15	\$3.88	\$4.02	\$4.02	\$4.09	\$4.08
Huron FOB Farm New Crop Corn Basis (C\$/bu)	n/a	n/a	n/a	n/a	n/a
Old Crop Soybean Futures (US\$/bu) - Nov '14	\$9.41	\$9.65	\$9.64	\$10.08	\$10.10
Chatham Average Old Crop Soybean Basis (C\$/bu)	\$0.44	\$0.49	\$0.54	\$0.62	\$0.79
New Crop Soybean Futures (US\$/bu) - Nov '15	\$9.63	\$9.81	\$9.76	\$9.91	\$9.98
Chatham Average New Crop Soybean Basis (C\$/bu)	\$0.20	\$0.25	\$0.29	\$0.32	\$0.41
Old Crop Wheat Futures (US\$/bu) - Dec '14	\$5.06	\$5.09	\$5.19	\$5.31	\$5.31
Hensall SRW Old Crop Wheat Basis (C\$/bu)	-\$0.05	\$0.05	\$0.10	\$0.10	\$0.15
New Crop Wheat Futures (US\$/bu) - Jul'15	\$5.34	\$5.36	\$5.47	\$5.61	\$5.55
Hensall SRW New Crop Wheat Basis (C\$/bu)	-\$0.35	-\$0.35	-\$0.30	-\$0.30	-\$0.25
Canadian Dollar Value (Noon Hour) C\$/US\$	\$0.8943	\$0.8900	\$0.8913	\$0.8946	\$0.8774

Data Source: Daily Ontario Commodity Report

Remember: Local Price = Futures Price +/- Local Basis

Corn



Closing Corn Futures (US\$/bushel) -

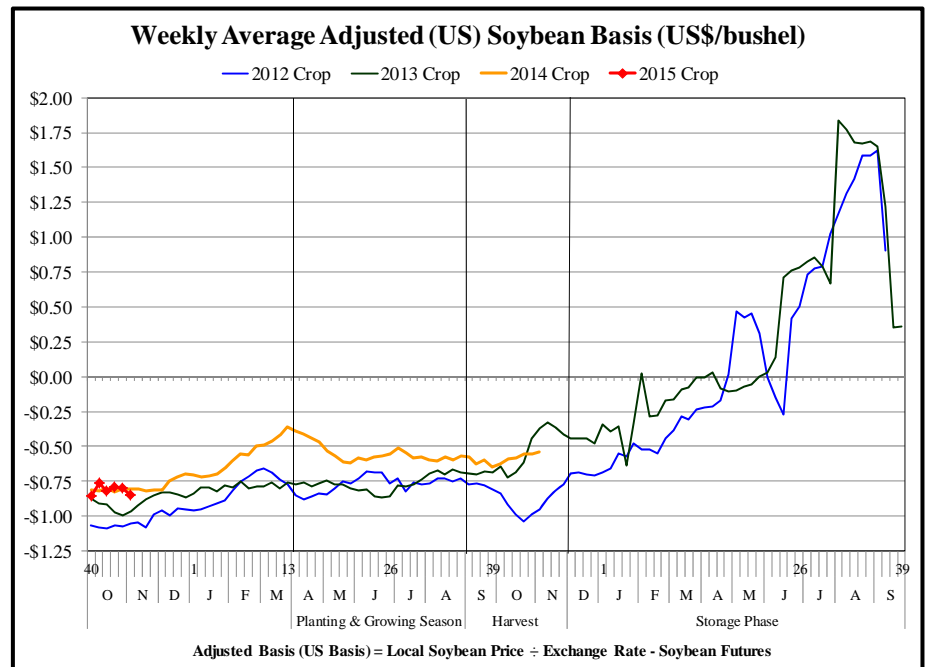
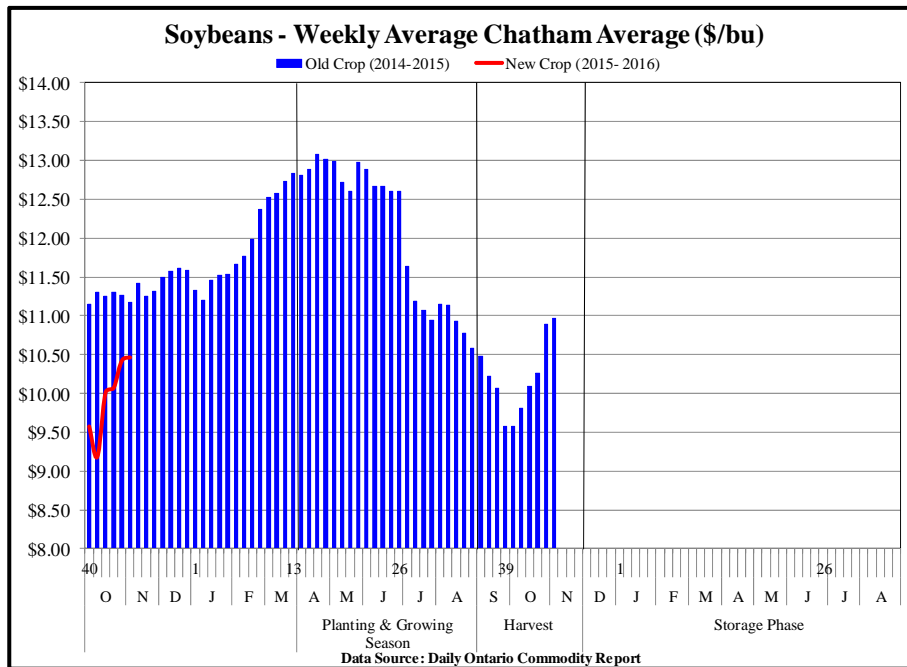
November 4, 2014

Current	\$3.65	\$3.77	\$3.86	\$3.93	\$3.97	\$4.08	\$4.16	\$4.11	
Contract	Dec '14	Mar '15	May '15	Jul '15	Sep '15	Dec '15	Dec '16	Dec '17	

Current Market Drivers:

- Mixed weather continues to keep harvest at a slow pace
- 65% harvested (normally at 73% for 5 year avg.)
- Still anticipating ample corn production, stable demand and comfortable ending stocks

Soybeans



Closing Soybean Futures (US\$/bushel) -

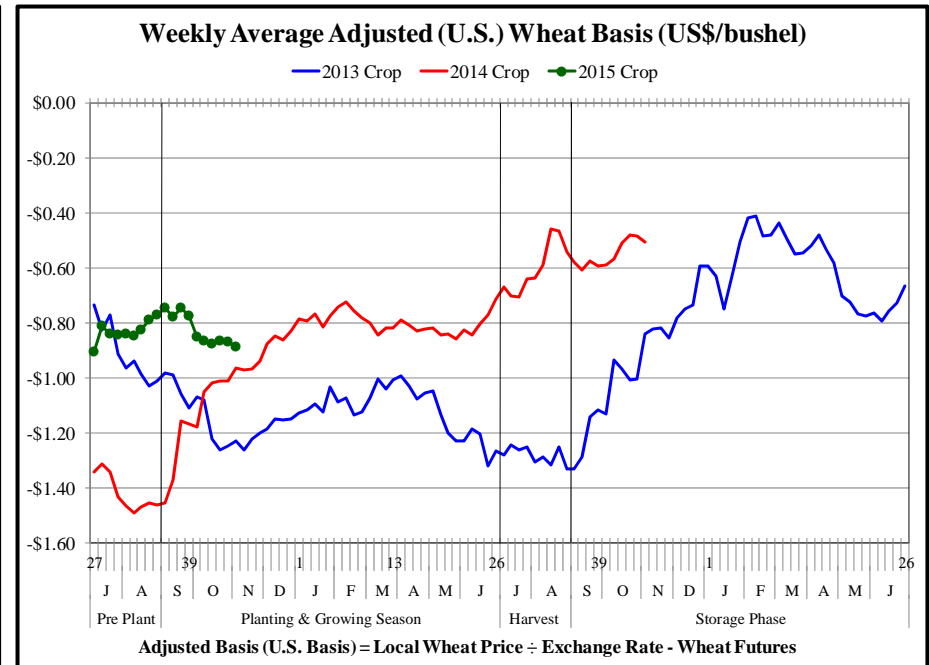
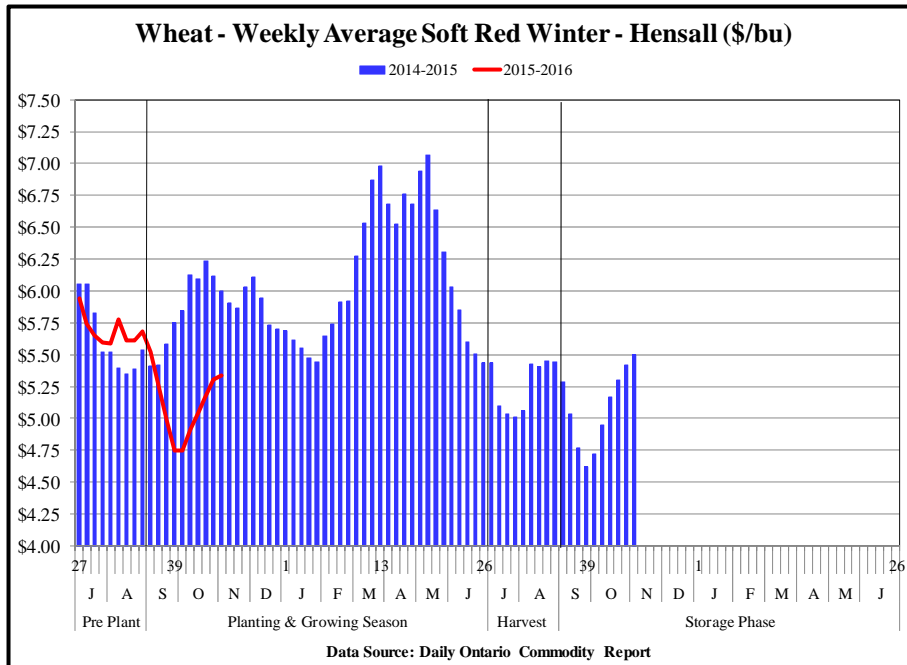
November 4, 2014

Current	\$10.10	\$10.10	\$10.15	\$10.20	\$10.24	\$9.98	\$9.92	\$9.90	
Contract	Nov '14	Jan '15	Mar '15	May '15	Jul '15	Nov '15	Nov '16	Nov '17	

Current Market Drivers:

- **83% Harvested (normally at 83% for 5 year avg.)**
- **Anticipated larger U.S. ending stocks, a forecast of another large S.A. crop and waiving demand from China**

Wheat



Closing Wheat Futures (US\$/bushel) -

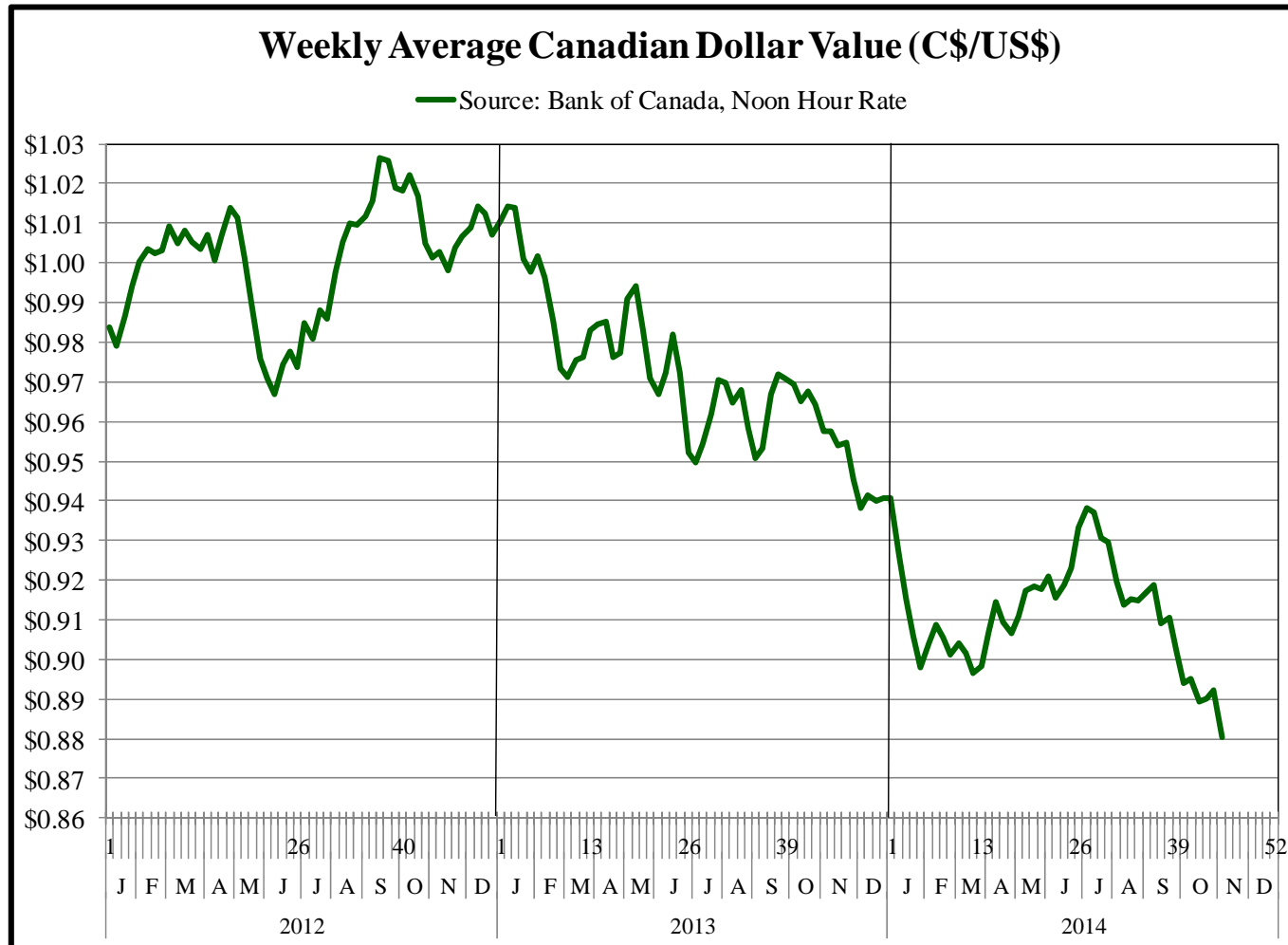
November 4, 2014

Current	\$5.31	\$5.42	\$5.48	\$5.55	\$5.65	\$5.78	\$5.87	\$5.29	
Contract	Dec '14	Mar'15	May '15	Jul '15	Sep '15	Dec '15	Jul '16	Jul '17	

Current Market Drivers:

- **90% of the U.S. Winter wheat planted (5 year average is 89%), 77% emerged**
- **Comfortable world wheat supply**
- **Market watching weather conditions in all world wheat production areas**

Canadian Dollar Trend



- Strengthening US dollar against world currencies and weaker oil prices keep downward pressure on the Canadian dollar
- Generally as the Canadian dollar rises, the basis will weaken and as the Canadian dollar falls, the basis will strengthen.

Special Notes

- The basis reported in the Tuesday – Closing Market Price Table on slide #2 is the local basis for the markets being used. It is impacted by the value of the Canadian dollar, transportation, local supply and demand, etc.
- The adjusted basis (U.S. Basis) removes the effect of the Canadian dollar changes with the resulting number showing the trend of all the other items impacting basis (i.e. transportation, supply, demand, etc.). The adjusted basis provides a good yearly basis comparison
- For the numerical data shown for the futures (slides 3, 4 and 5) and the current week in the table on slide #2, a blue number indicates it is up, a red number indicates it is down, and a black number indicates it is the same as the previous Tuesday's number